

5935 BANO SWIVEL TOILET WASH AND DRY

INSTALLATION INSTRUCTIONS BANO SWIVEL TOILET

NO
EN
SE
DK



Bano provides a 3-year warranty against manufacturing defects: i.e. if such defects appear within 3 years of installation, customers can replace the defective item with a corresponding properties.

TABLE OF CONTENTS

Side

Introduction	3
Accessories	3
Safety	4
Technical data	5
Interface	6
List of contents	7
Preparation before assembling	8
Installing flexible WC-pipe	8
Fixing to wall	9
Adjustment in case of uneven floor	10
Silicone	11
Connection of reinforced hoses	12
Adjusting threaded bolts for toilet fixing	12
Installing WC pipe, flush pipe, roller blind and cover	13
Installing flush button	15
Installing toilet bowl	16
Bluetooth connection	20
Toilet roll holder	21
Toilet roll holder	22
Wash/dry-program / Swiveling seat	23
Spare parts	24

Introduction

With Bano reversible toilet, you can easily turn the toilet seat 290 degrees, which simplifies access to the toilet. The toilet seat is easily turned using the red levers integrated in the toilet's support handle. The reversible toilet can be height-adjusted easily from an integrated panel in both toilet support handles. This is to facilitate the nurse's work so that one can quickly and easily adapt the toilet to the user's height. The height from floor to toilet bowl can be adjusted 20cm.

The reversible toilet is delivered with flushing and drying function. A simple and user-friendly solution for a comfortable toilet visit that cleans with a warm and comfortable water jet. The intimate wash is fully automatic with just the push of a button.

Accessories

With external pipes, please use an extension (5970-22/5970-23), either 50 mm or 100 mm.

Article numbers:

5965	WC 530
5975	WC 700
5985EC	WC-bowl 530 mm EasyClean
5995EC	WC-bowl 700 mm EasyClean
5920-BVT	Bano swivel toilet
5603	Grab bars WC 900 mm (35 in.)
5604	Grab bars WC 700 mm (28 in.)
5970-22	Extension 50 mm
5970-23	Extension 100 mm
5970-03	Toilet seat, white
5970-06	Toilet seat, grey

Safety

General safety instructions

- This appliance may be used by children and persons with reduced physical, sensory, or mental abilities or lack of experience and / or knowledge, if they are being monitored or has been schooled in safe use of the appliance and has understood the dangers that may result from incorrect use.
- Read the installation instructions before installing and using the product.
- Keep installation instructions for future reference
- Do not use the product if it is damaged. Disconnect power and water and contact Bano.
- Use the product only for its intended use.
- Do not use accessories not recommended by Bano
- Follow Banos instructions for maintenance and cleaning
- If the product is not to be used for a long time, unplug the power cord and close the water supply.

WARNING! Risk of electric shock

Failure to follow the following warnings may result in electric shock, fire, personal injury, property damage, or product damage:

- Do not use a damaged power plug or a loose power outlet.
- Make sure to use a suitable power outlet.
- Do not move the product by pulling on the power cord.
- Do not handle power plugs with wet hands.
- Do not bend the power cord with force or place heavy objects on it to prevent it from being damaged or deformed.
- Disconnect the product before repairing, inspecting or replacing parts.
- Remove any dust or water from the power plug.
- If the power cord is damaged, it must be replaced by the manufacturer or a qualified person in order to avoid a hazard.
- Pull out the power plug if the product makes unusual noises, emits smoke or odor of burnt.
- Do not insert objects into openings on the product.
- Do not use the product if it does not work properly. Contact Bano.
- If foreign matter enters the product, pull out the power plug and turn off the water supply.
- Do not disassemble, repair or modify the product yourself.
- Do not block the hot air outlet with your hand or other objects.
- Be sure to check all water connections for leaks after installation.
- The product must only be connected to a cold water supply.

Pursuant to section 21 of the Electrical Equipment Regulations, Bano AS is obliged to inform our consumers that installation material intended to be included in a permanent electrical system can only be installed by a registered installation company. In order for guarantees to be valid, all electrical equipment must be installed in accordance with the installation instructions and any precautions and restrictions, and performed by a registered installation company.

NOTE!

**It is important to follow the start-up procedure,
see page 22.**

**The water supply must always be opened
before the switch is turned on!**

Technical data

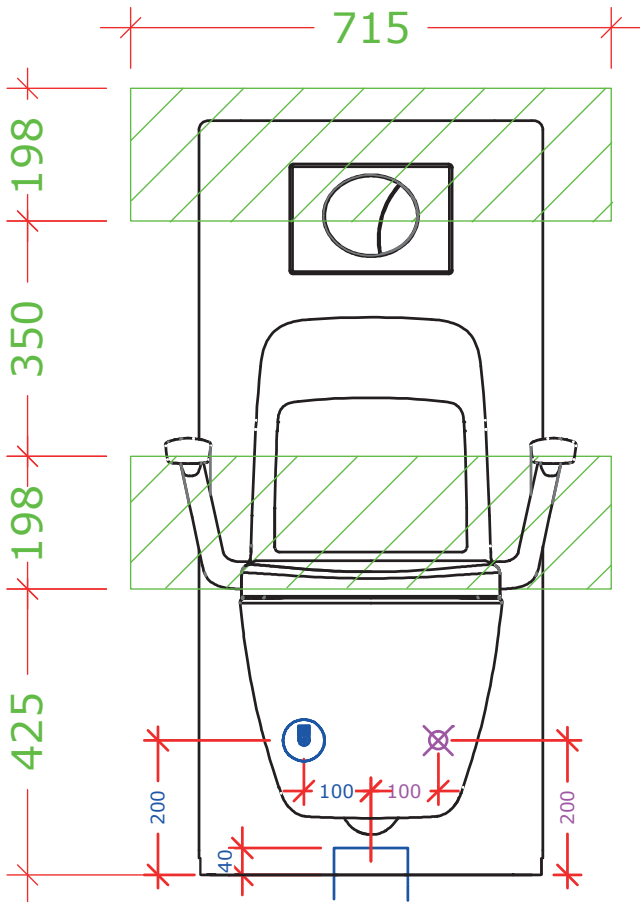
Product name	:	BANO SWIVEL TOILET WASH AND DRY
Product number	:	5935
Height-adjustment	:	20 cm
Material cistern	:	Main frame: Corrosion treated steel, EI galvanized. Cover: ABS/PMMA plastic, colour code RAL 9016 (standard colour)
Material swivel toilet	:	Seat cover: ABS/ PMMA plastic Back support: integral foam with polyurethane varnish Toilet: glazed porcelain
Max weight load	:	Static load, toilet: 500 kg Static load, grab bars: 250 kg Maximum dynamic load, lifting: 300 kg
U In	:	230V ~ /50 Hz
I In	:	Max 3,9A
U Out	:	24V ⁼⁼ , max. 100VA IPX6
Int.	:	10%, max. 2 min./18 min.

The cisterns are intended for installation in zone 1 with permanent installation.

Wash/dry system	:	Rinse duration: 180s Drying duration: 180s Degree of protection: IPX6 Rated voltage: 230V AC Mains frequency: 50Hz Input current: 1200W Max. flow pressure: 1,5-10 bar Water temp. factory setting: 37°C Water consumption: 0,5 l/min
-----------------	---	--

Producer	:	BANO AS Email: post@bano.no Phone: +47 57 86 98 00 Web site: www.bano.no
----------	---	---

Interface



NOTE! PLUMBING

Water outlet on left side as shown in illustration.

Placement of stopvalve: because of moving parts when adjusting the cistern's height the stop valve must be placed exactly as is shown on the illustration. Stopvalves are turned as shown on drawing.

Concerning water; finish with stop valve with 1/2" external threads (G15). (Threads pointing up)

Drainpipe in floor: Ø110 drainpipe without cuff is finished 40 mm above floor.

Placement of drain pipes in the wall: Ø110 drain pipe c / c 180mm above finished floor; cut at the wall

NOTE! ELECTRICAL:

Electrical installation only for products with electrical height adjustment.

Electrical outlet on right side as shown in illustration. Electrical cable/ pipe is pulled 500 mm from wall and placed 200 mm above finished floor and 100 mm from the center of the cistern's drain.

Electrician connects IP44-box after the cistern is installed. (IP44-box not included)

OBS! RIB:

Loadtested until 500 kg.

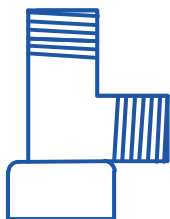
Min.: 48x198 board

Nailingstrips must be placed flush against wall material.

Nailing strips are indicated with shaded area.

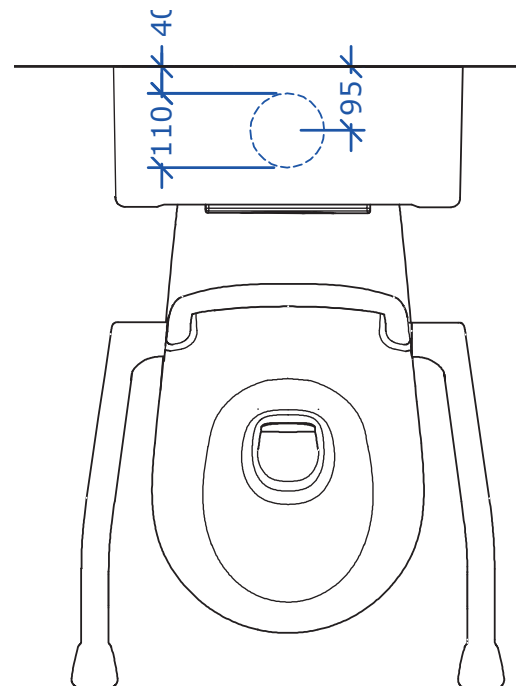
T-pipe

1/2" external threads
(Bano cisterns)



1/2" internal threads

1/2" external threads
(shower toilet)



List of contents



Cistern



Toilet bowl with swivel module and flush / dry



Back support



9700 Flush button, cistern



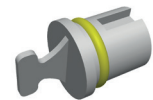
Toilet seat



9880 Mounting set for toilet bowl, with tools



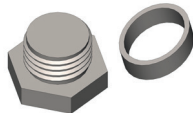
9835-02 Height adjustment cable



9878 Plug for hand control



Mounting bolts, toilet bowl



9751 Nut and spacer sleeve



Washer pipe



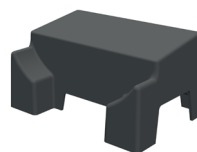
ISO 7380 M4x12 (for attaching drain bracket)



9787 Flexible drain pipe for wall, with bracket



9710-01 Clamp with holder (drain, wall)



9847 Support for drain hose wall (only for wall drains)



5908 Toilet roll holders



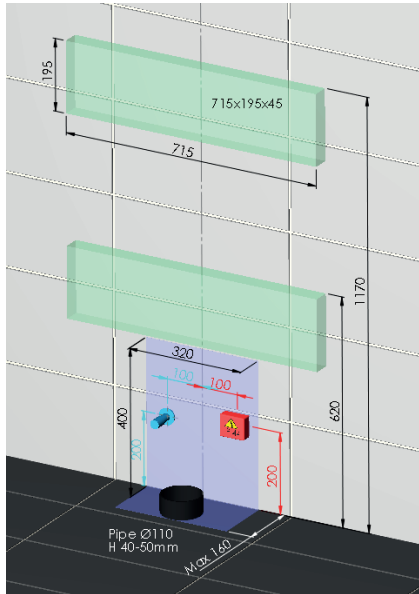
9794 Flexible drain pipe for floor, with bracket



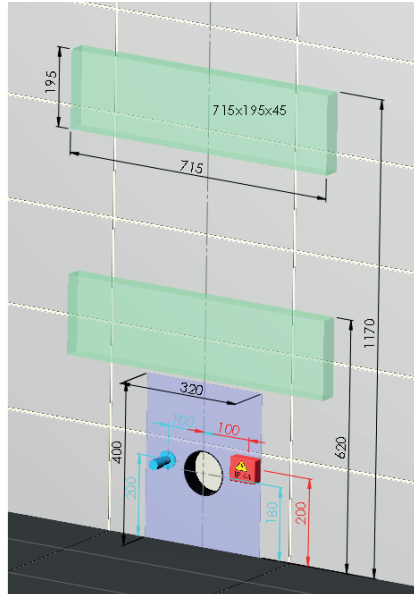
9753 Double jet connection (drain floor)

Preparation before assembling

Drain in the floor, reinforcements,
hidden pipes

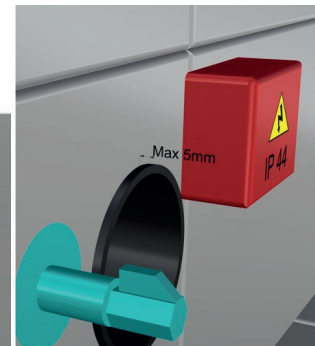
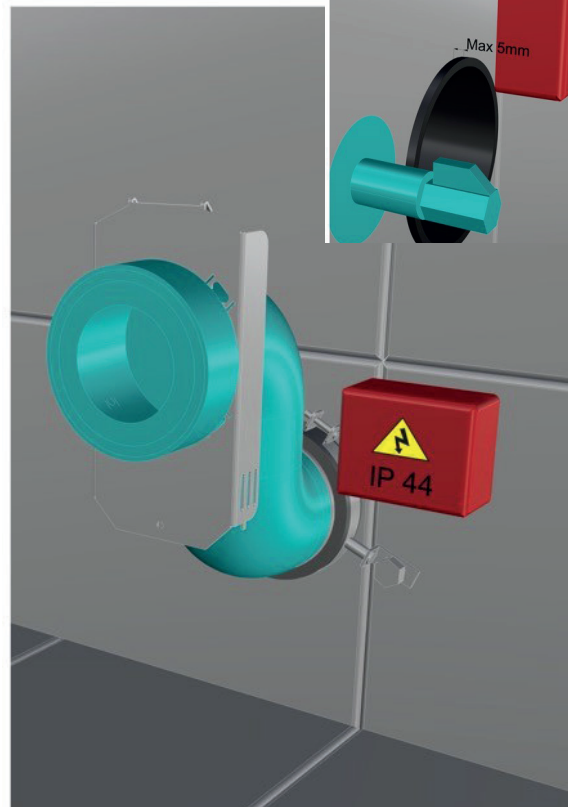
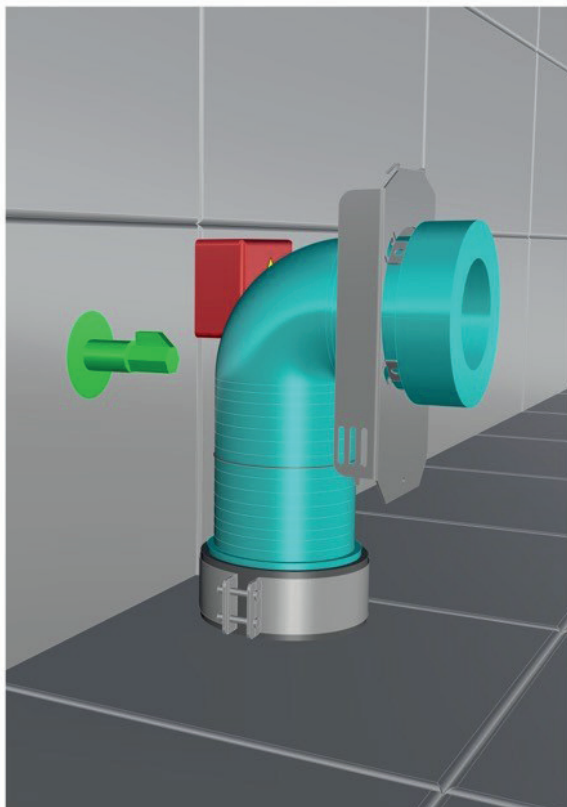


Drain in the floor, reinforcements,
hidden pipes



⚠ NB! Flush the pipes for 30 seconds before you install the cistern.

Installing flexible WC-pipe



Fixing to wall

Make sure never to perforate wet walls completely. Clean the holes after drilling. Make sure to use sealant approved for application on wet walls. See [illustration](#).

Please note that the product guarantee only applies when the wall and screws are dimensioned according to «Byggebransjens Våtromsnorm» and Bano interface for products mounted in Norway. For products mounted in other countries, please note that the product guarantee only applies when wall and screws are dimensioned according to national guidelines/regulations and Bano interface.

Tiled wooden wall:

Make sure never to perforate wet walls completely. Drill holes with a 10 mm drill bit through the tiles only. Clean and fill the hole with sealant approved for application on wet walls. See [illustration](#).

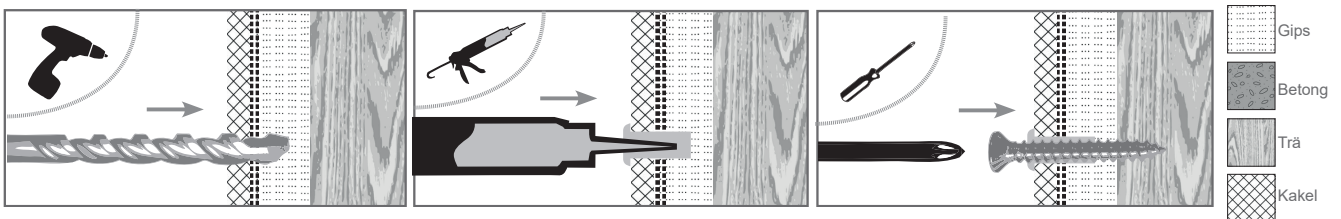
Tiled concrete wall:

Drill holes using a 12 mm drill bit through the tiles only. Switch to a 10 mm drill bit for further drilling through the concrete. Fill the hole with sealant, place a nylon plug in the hole and fill the plug with sealant. See [illustration](#).

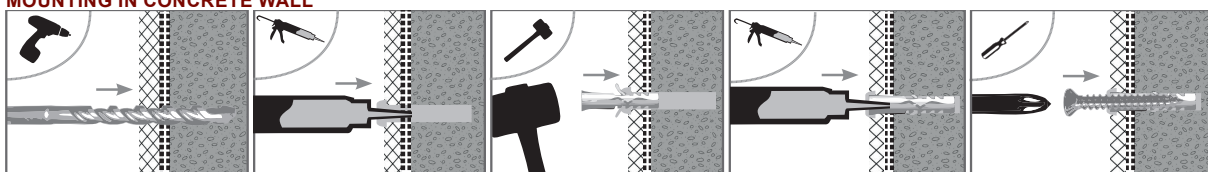
Other wall materials (bathroom boards, vinyl):

Make sure never to perforate wet walls completely. Drill holes which are dimensioned for said type of wall. Fill the hole with sealant, place a nylon plug in the hole and fill the plug with sealant. See [illustration](#).

MOUNTING IN WOOD WALL



MOUNTING IN CONCRETE WALL

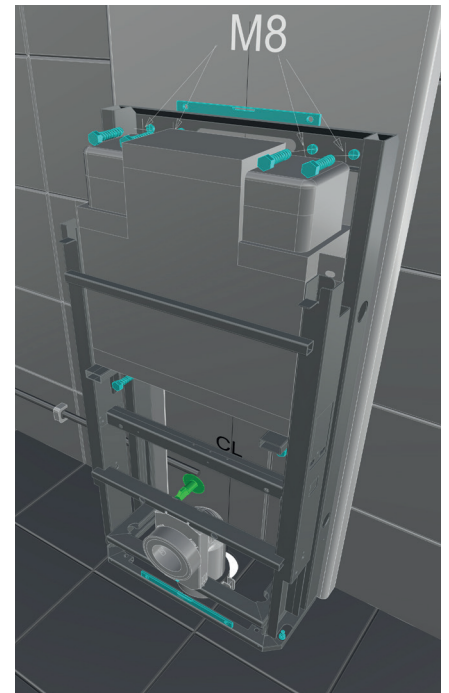
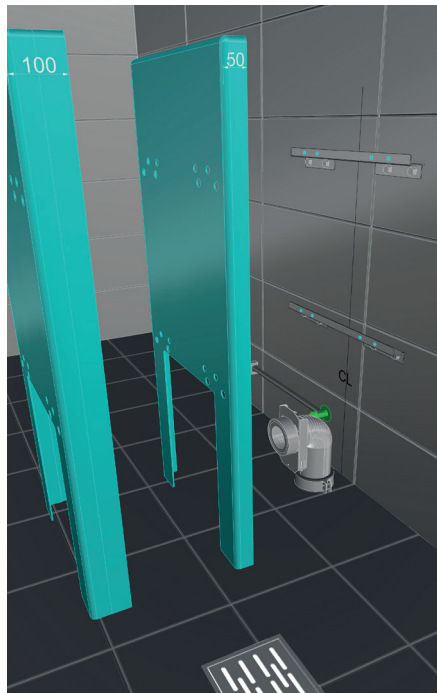


Step 1:

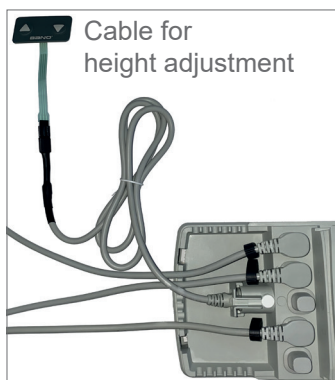
Lower the cistern to the bottom position and secure to the wall with appropriate screws for the wall. Bano recommends M8 A4 DIN571 Hex head wood screws. For concrete Bano recommends French wood screws M6 in combination with a nylon plug.

Step 2:

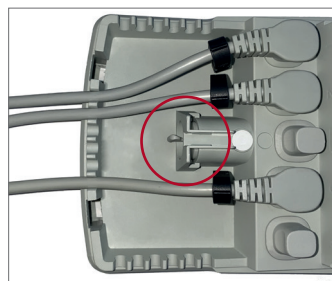
Raise the cistern to the top position and secure to the wall with appropriate screws for the wall. Bano recommends M8 A4 DIN571 Hex head wood screws.. For concrete Bano recommends French wood screws M6 in combination with a nylon plug.



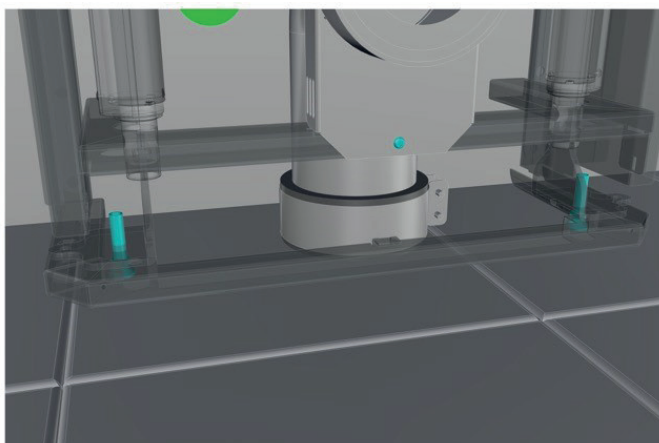
The cistern can be raised / lowered using the supplied cable. Remember to disconnect the cable after mounting the cistern and plug the hole with "Plug for hand control", (see table of contents page 7).



Plug for hand control

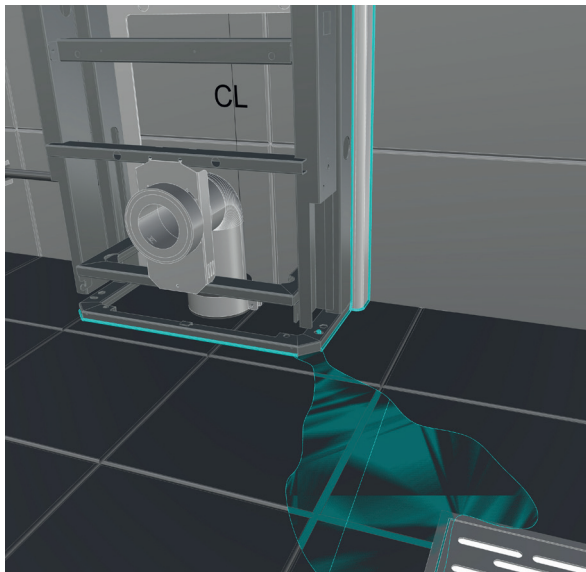


Adjustment in case of uneven floor



If uneven floors (eg. slope towards the drain) the cistern can be adjusted using the adjustment screws found on the bottom of each side. Can be adjusted from top by hand.

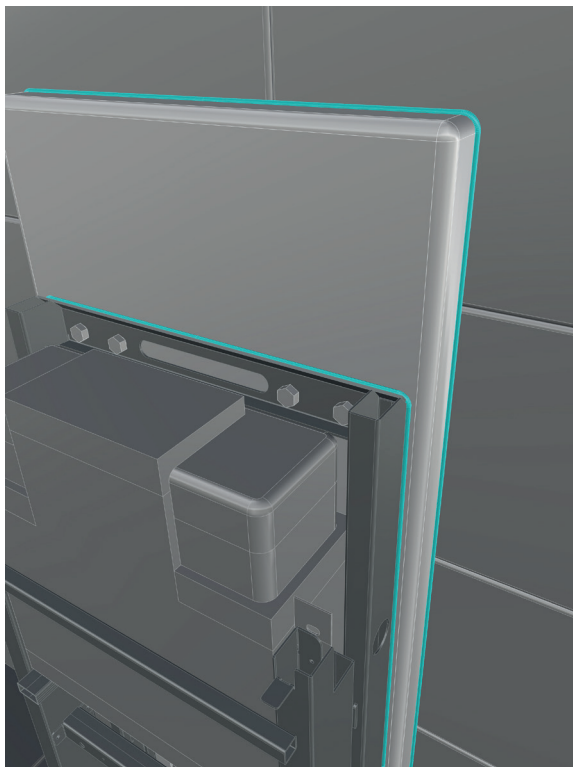
Silicone



Step 3:

The cistern frame must be waterproof against the floor and wall or the extension for the cistern.

NB! As a warning for any leakage in the cistern, there must be a 5 cm long opening under the frame in the front corner towards the drain. (See picture)

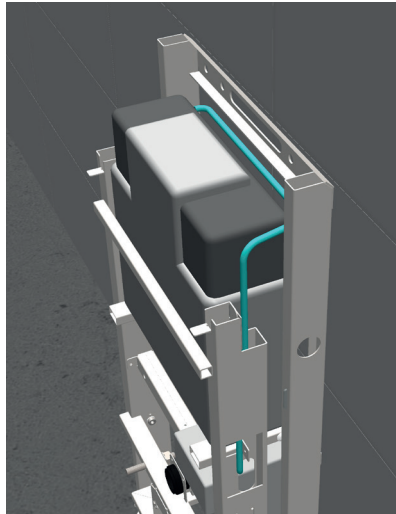
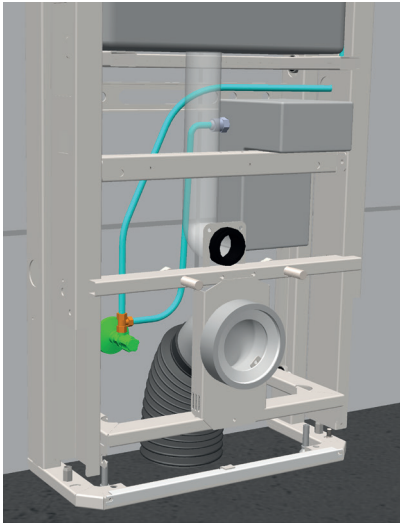


Silicone must be applied ALL the way around the cistern frame – against the wall or the extension module

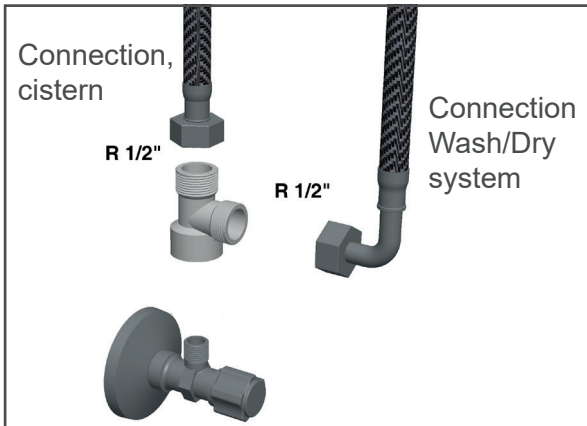
If the extension module is mounted between the cistern frame and the wall, this must also be applied with silicone all around. (Remember to remove protective plastic on the extension module before applying silicone.)

The side- and front covers are mounted when the silicone is dry.

Connection of reinforced hoses



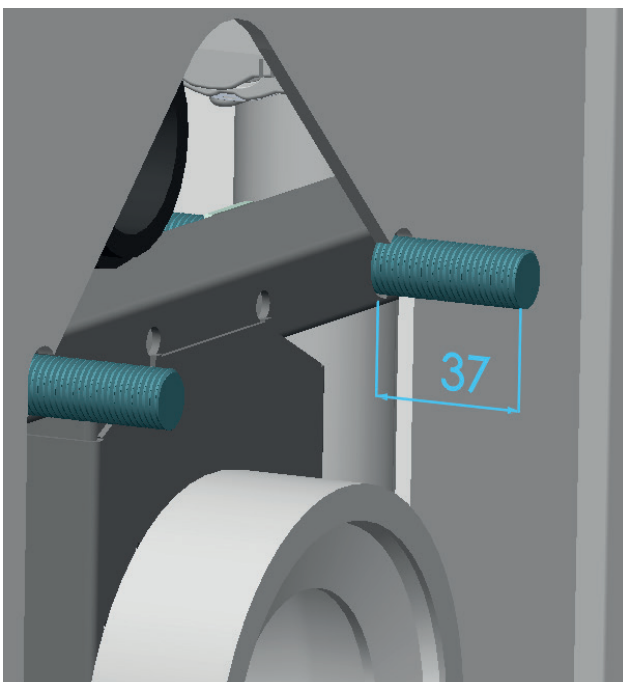
⚠ NB! Make sure the valves are open. Both inside the cistern and next to the drain pipe.



NOTE!
It is important to follow the start-up procedure, see page 22.

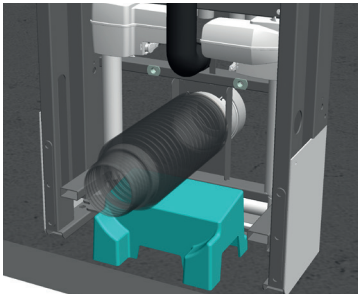
The water supply must always be opened before the power switch is turned on!

Adjusting threaded bolts for toilet fixing

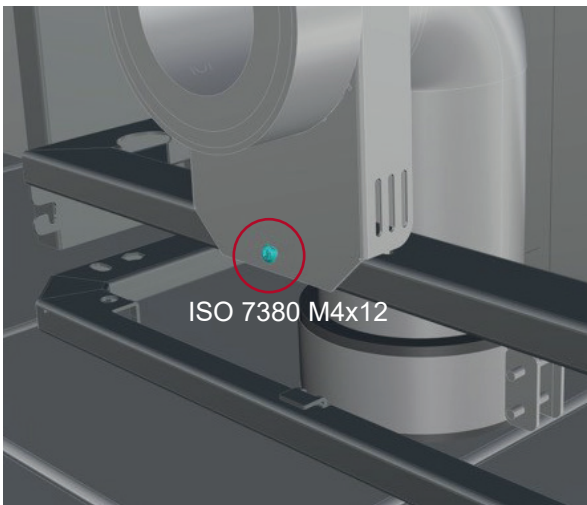


⚠ NOTE! The protruding length of the mounting bolt must be 37 mm from the cistern frame to the end of the mounting bolt.

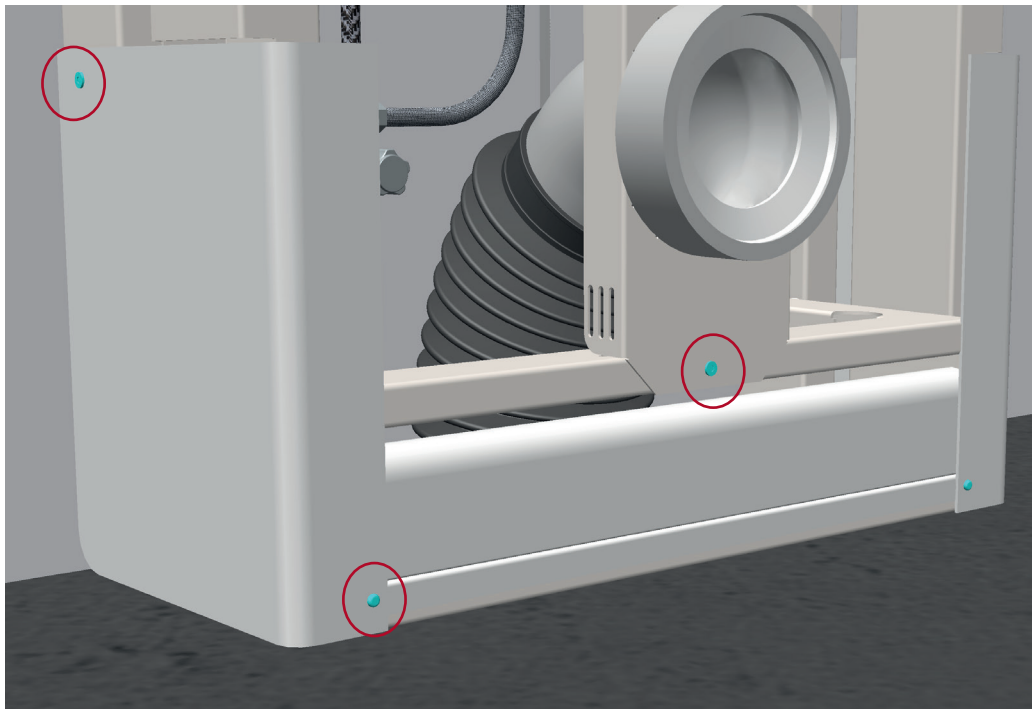
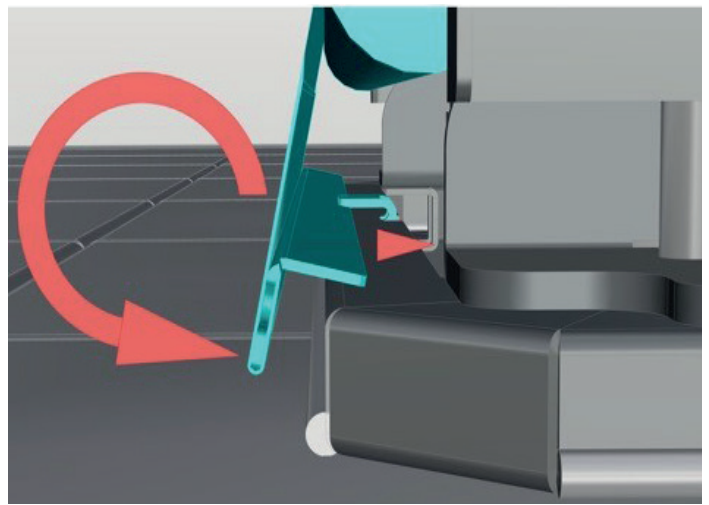
Installing WC pipe, flush pipe, roller blind and cover

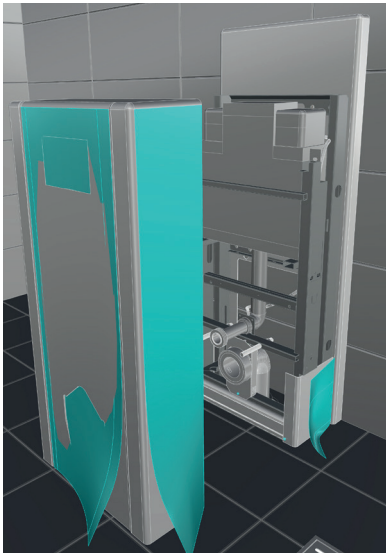


NOTE! For drain outlet in wall, the support is placed under the flexible drain hose.



ISO 7380 M4x12

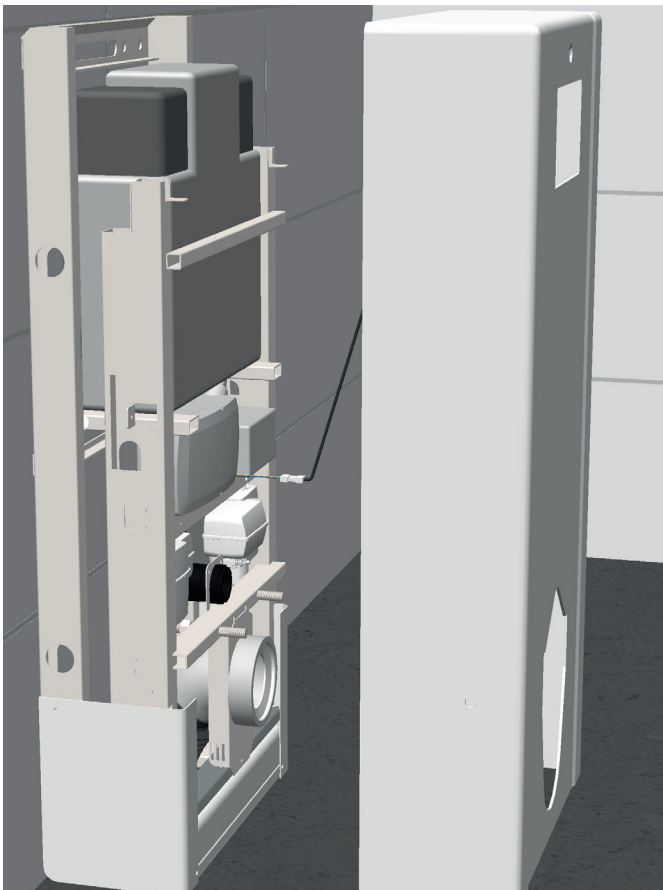




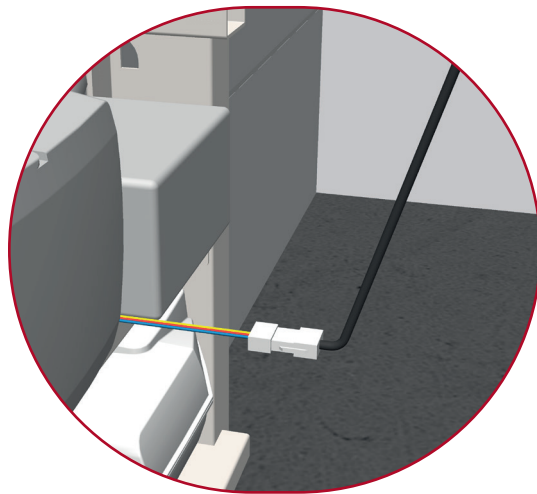
NOTE!
It is important to follow the start-up procedure,
see page 22.

**The water supply must always be opened
before the power switch is turned on!**

⚠ NOTE! It is recommended to connect to Bluetooth
before installing the last cover. Bluetooth connection
instructions found on page 20.

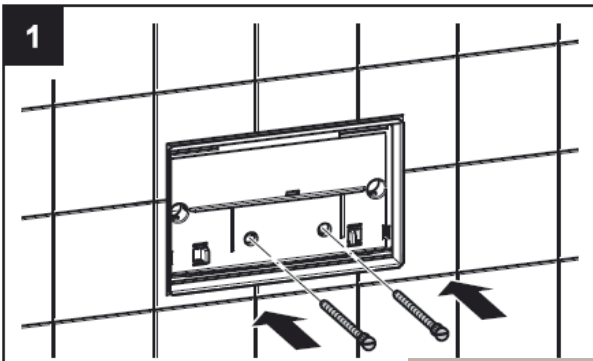


⚠ NOTE! Connect sensor from cistern cover

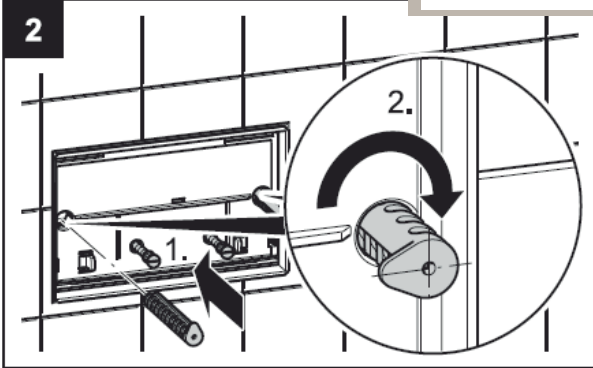
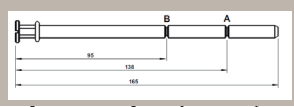


⚠ NOTE! It is important that the spacer sleeve is
mounted together with the aperture nut.

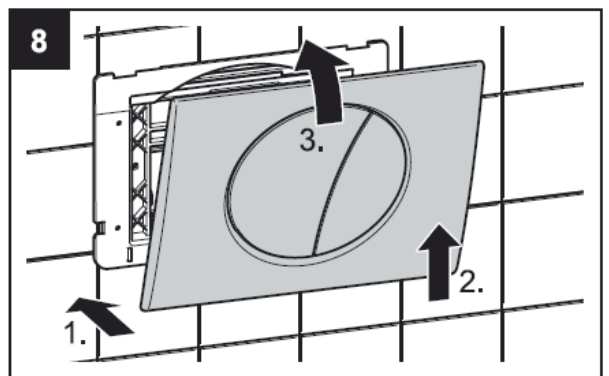
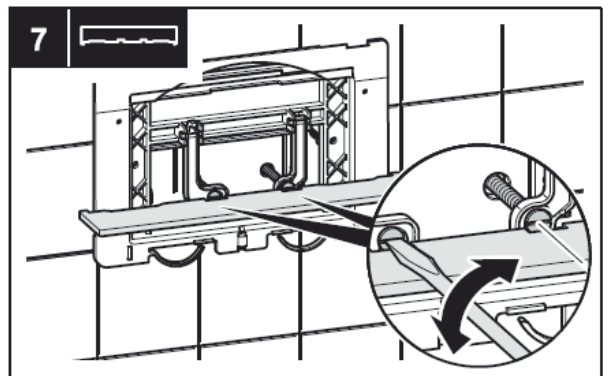
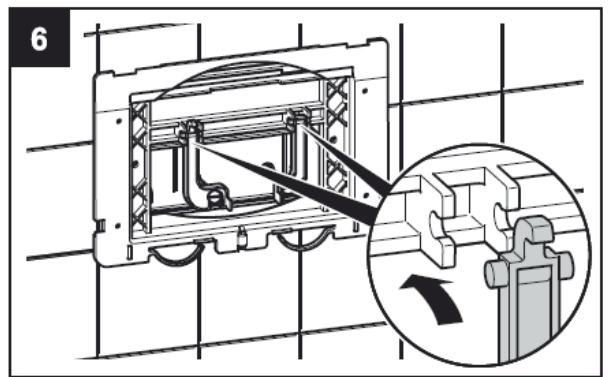
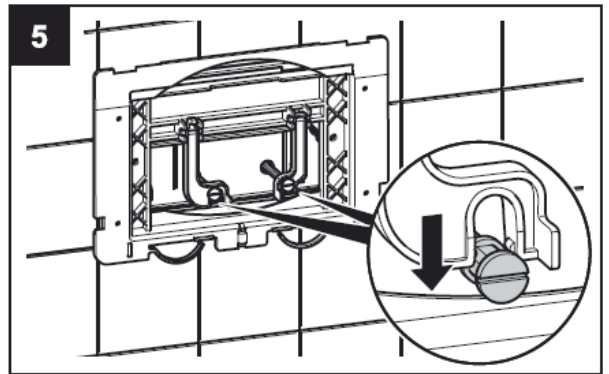
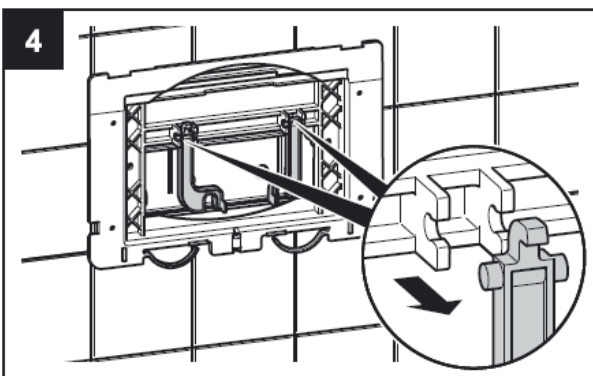
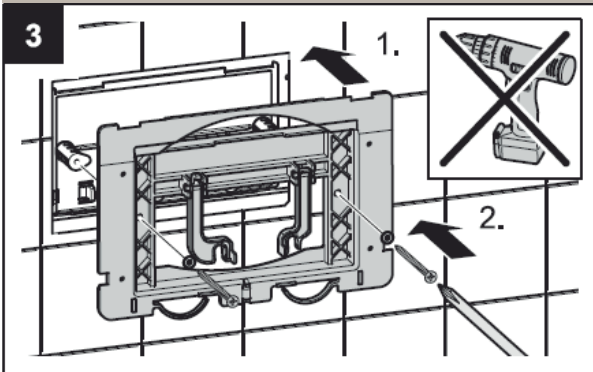
Installing flush button



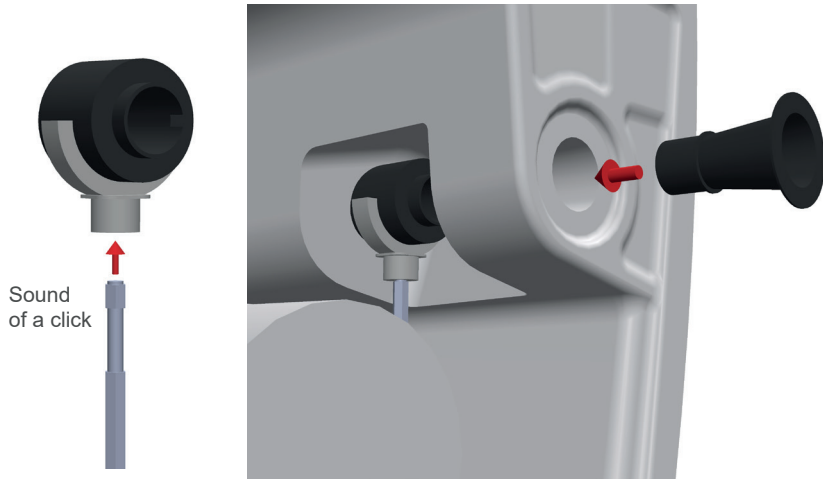
Break the green and white adjustment pin by the 95mm mark (B)



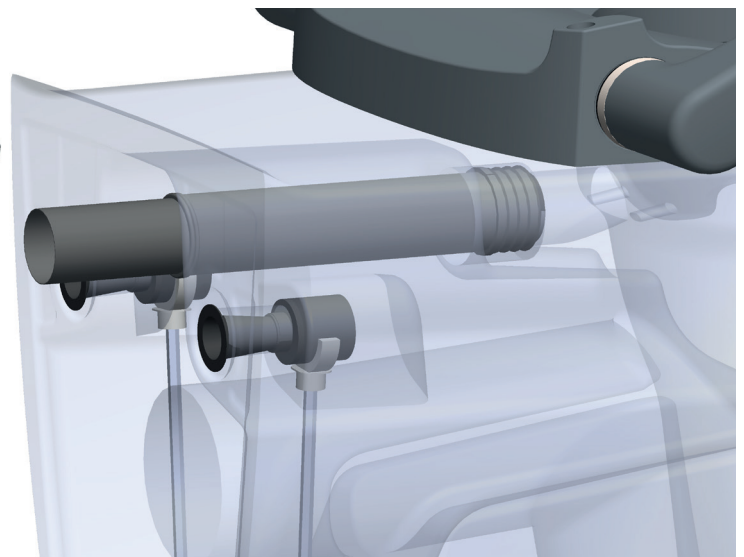
Cut the left pin in half, lengthwise.



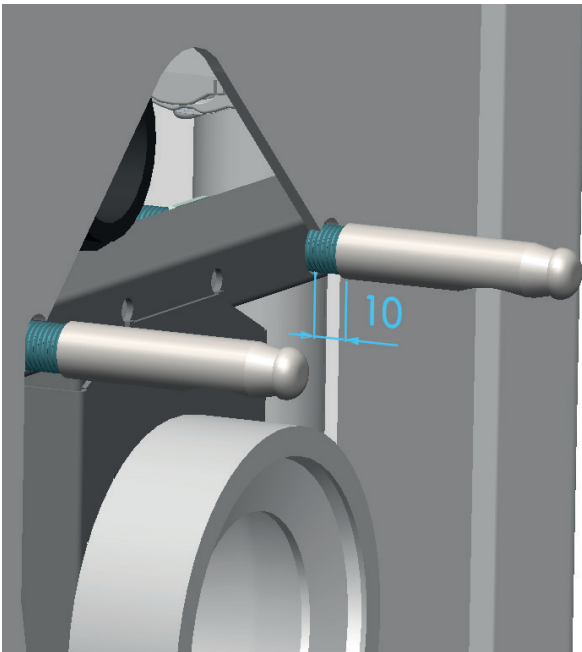
Installing toilet bowl



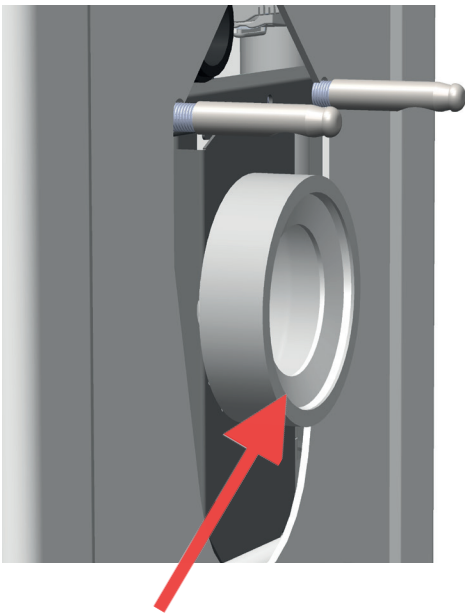
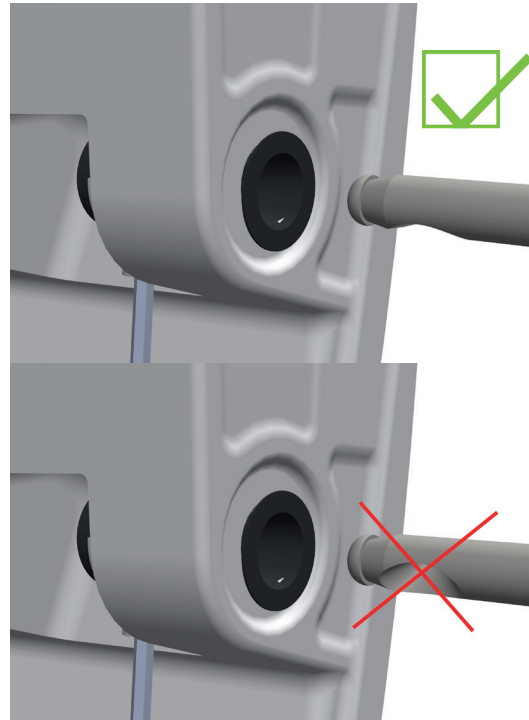
⚠ NOTE! cutting length flushing pipe:
260mm



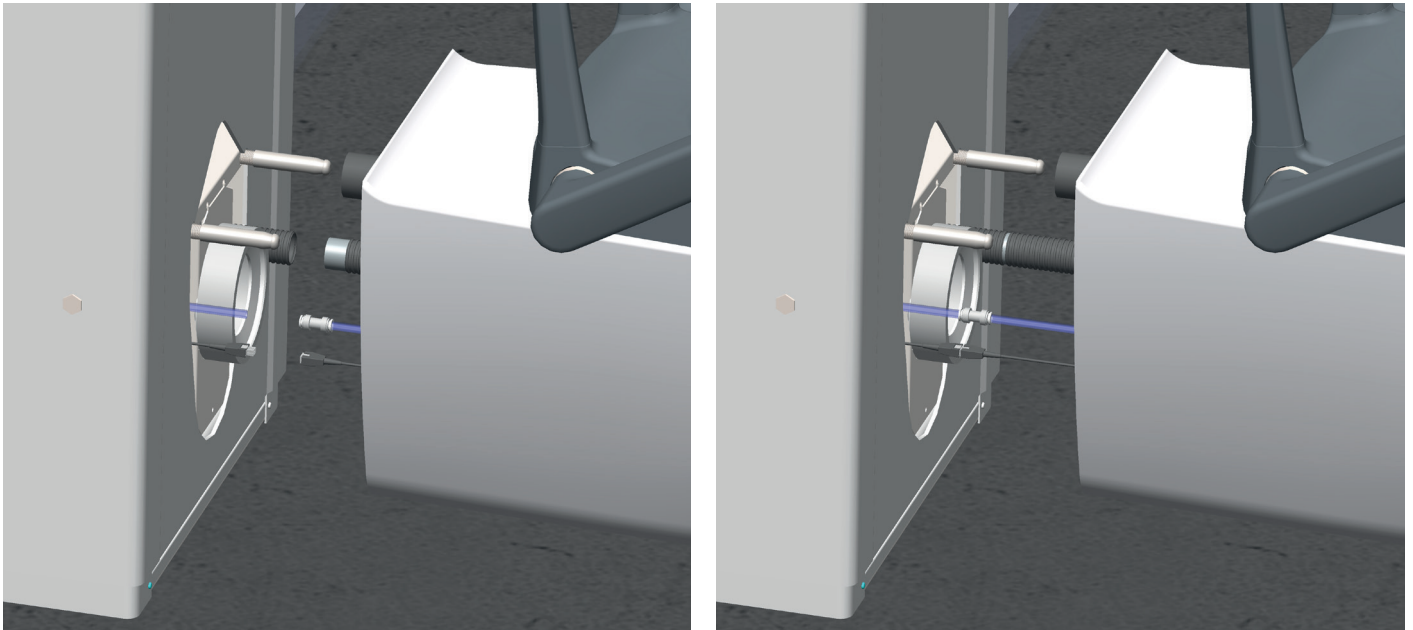
⚠ NOTE! The flushing pipe must be placed completely
at the bottom of the flushing hole.



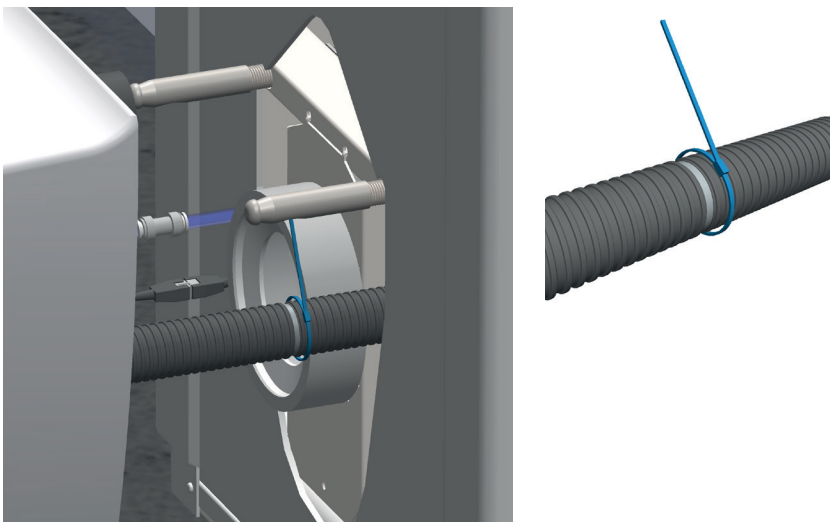
The distance between the mounting sleeve and the cistern frame must be 10 mm.



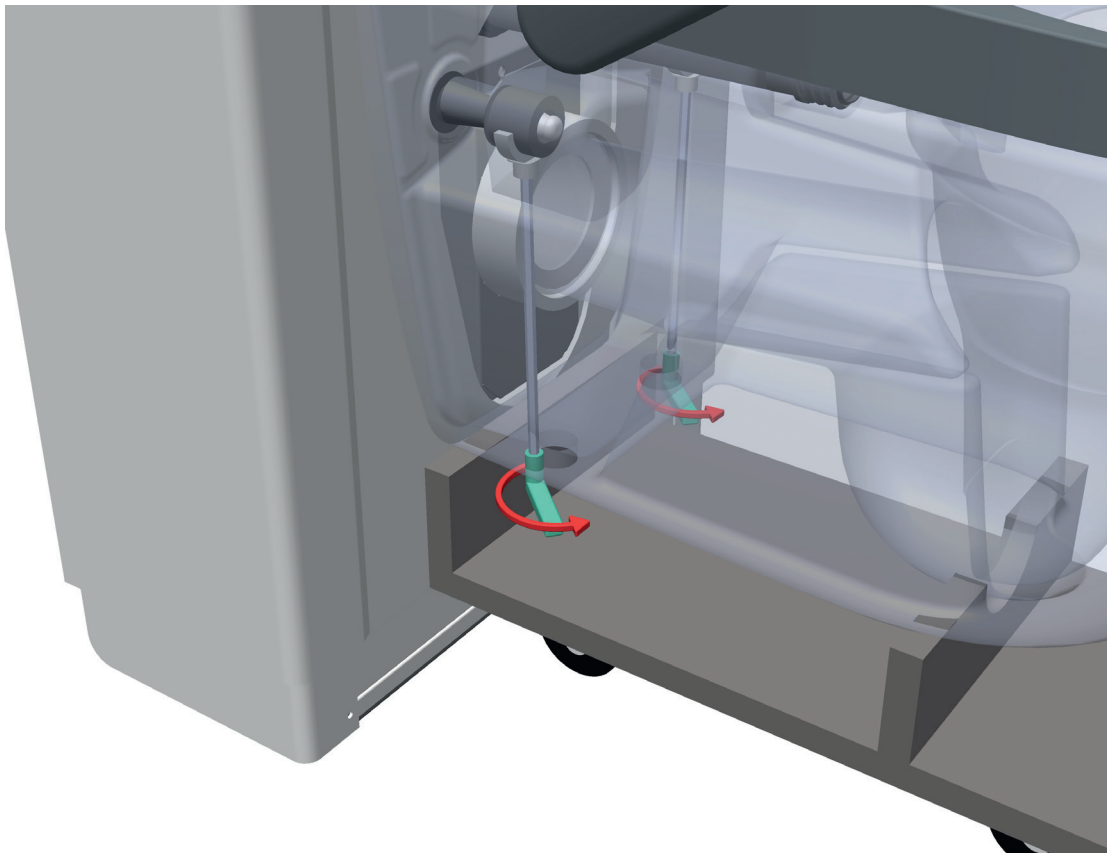
Apply Silicone Super Glider



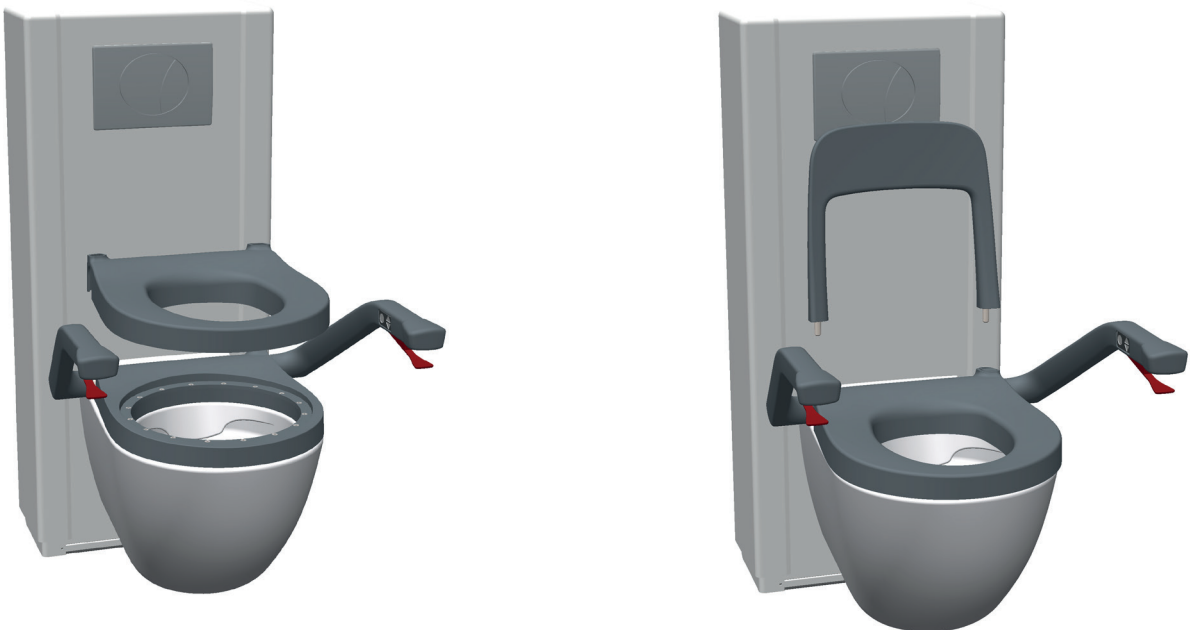
Water hose and power cable are placed on the left side of the drain pipe, and the dryer hose on the right (seen from the front). Make sure that the water cable, power cable and dryer hose are positioned so that they are not in danger of getting stuck between elements during installation of the toilet bowl.



⚠ NOTE! Check that the washing function works before fastening the toilet bowl. See page 23 for washing function.



Tighten set screw on both sides (max 6Nm)



Bluetooth connection

- The cistern must be connected to power before a Bluetooth connection can be made.
- The toilet bowl must be placed right next to the cistern.



Press the UP and DOWN buttons on the left side + the UP button on the right side for about 5 seconds. Release the buttons when you hear the beep.

You will now hear slow beeping for a few seconds before moving on to a quicker beeping.



When the sound of the beeping goes quicker, press the UP button on the left side to confirm the connection.



Control if Bluetooth is connected by raising or lowering the cistern. If the connection does not work properly the first time, repeat connection process.

Toilet roll holder



Start-up process

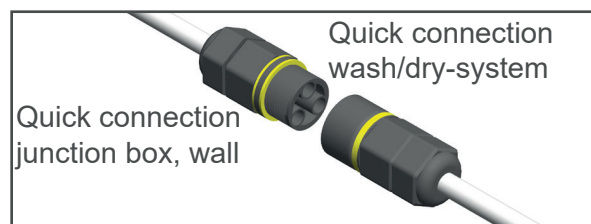
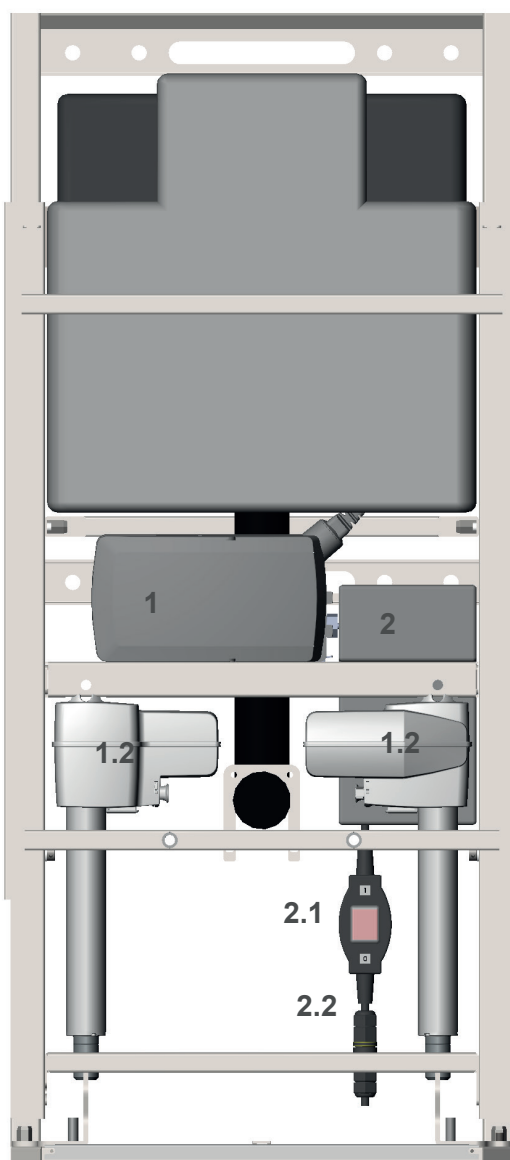
If the toilet is not to be used for a longer period, the system must be delivered as follows:

- The water hoses must be connected to the stop valve. The stop valve and the water supply must be open.
- The power switch must be off. The quick connection of the wash / dry system must be connected to the quick connection to the junction box in the wall.

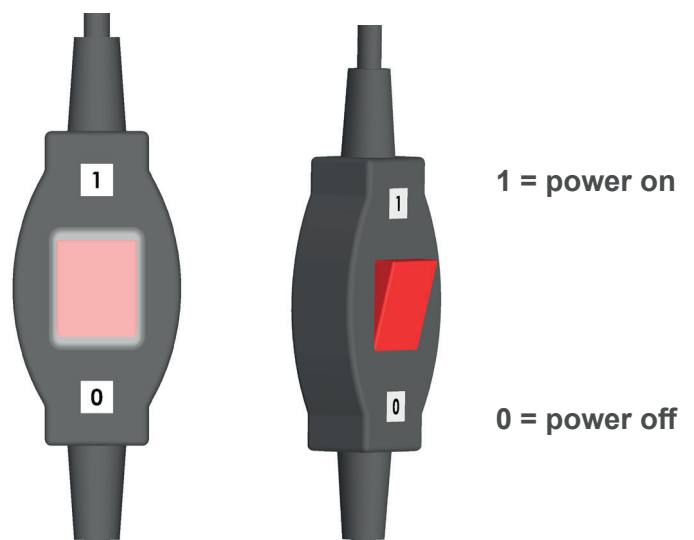
Bano generally recommends turning off the power to the wash / dry system if it is not to be used for a longer period of time.

Start-up process:

1. Make sure the water supply is open. This can be controlled by draining the cistern tank twice.
 2. Turn on the power switch located inside the cistern. Access to be found via the blind when the cistern is in the highest position. A glowing light in the switch indicates the switch being in on-position.
- When the power is connected, the system will perform an automatic start-up procedure. The wash/dry-function can be used after 15 minutes.



- 1 Control box for height adjustment
- 1.2 Motor for height adjustment
- 2 Wash/dry-system
- 2.1 Power switch for wash/dry-system
- 2.2 Quick connection for wash/dry-system



Wash/dry-program

At the top of the cistern is a sensor which means that the wash/dry function can only be activated when it registers a seated person on the toilet.

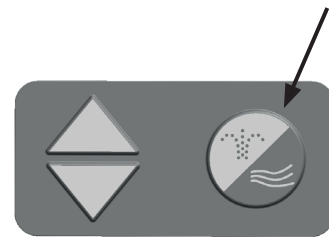
1. Press the wash/dry-button for 1-2 seconds to start washing program.

It is added as a security feature that there must be a firm, controlled push of the button to prevent the programme from starting by accident.

2. The program starts intimate washing with water for 3 minutes and then automatically switches to 3 minutes with drying. After drying, the program turns off.

If you want a shorter intimate wash, press the button again to finish. The program will proceed to the drying process. If you want to end the drying function, press the button again to end the program.

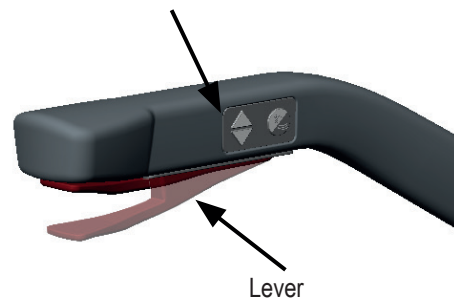
wash/dry-button



Swiveling seat

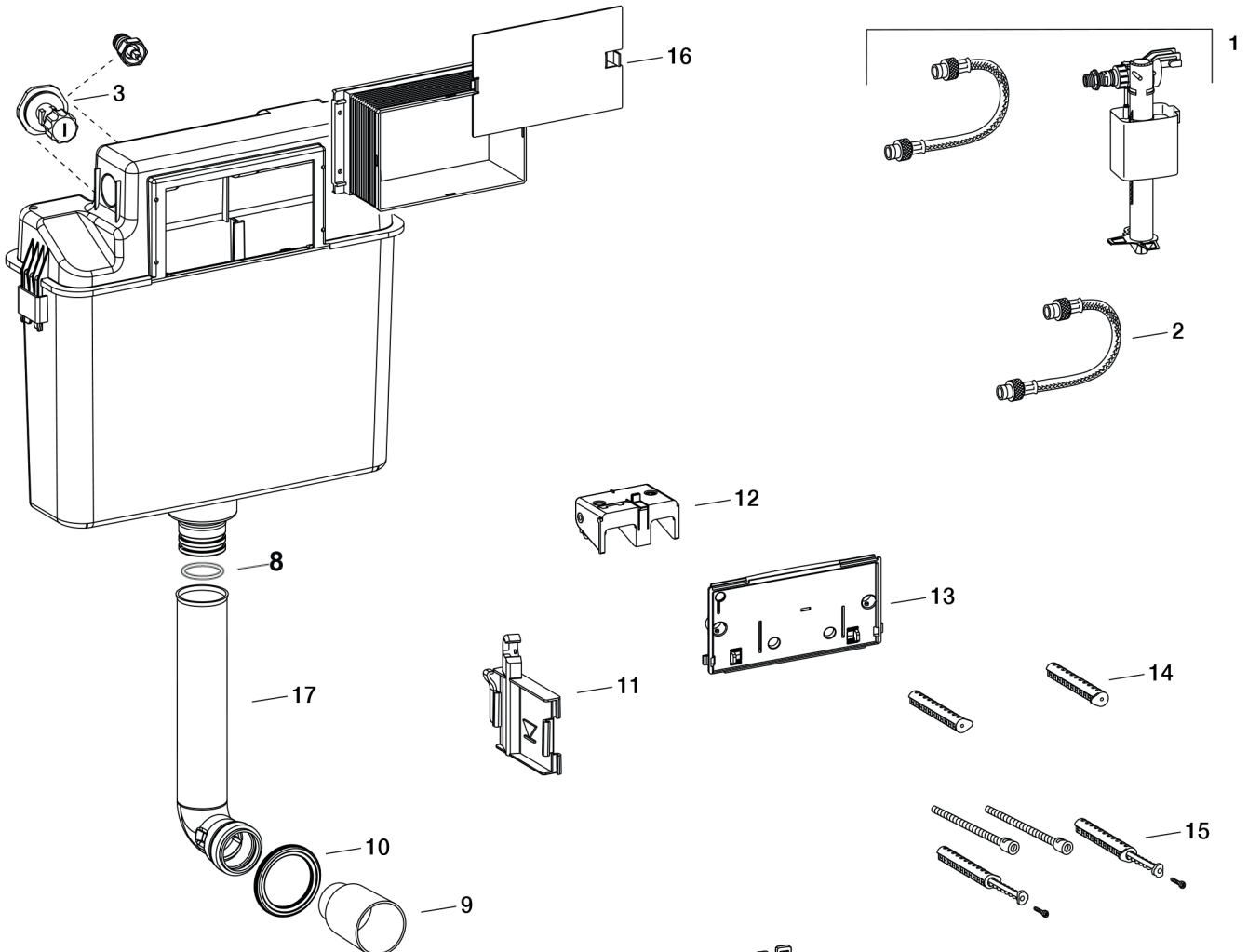
The toilet seat is easily turnable by using the red levers integrated in the toilet's support handles. The toilet can be lifted and lowered 20 cm using the lift/lowering button.

Lift/lower button.

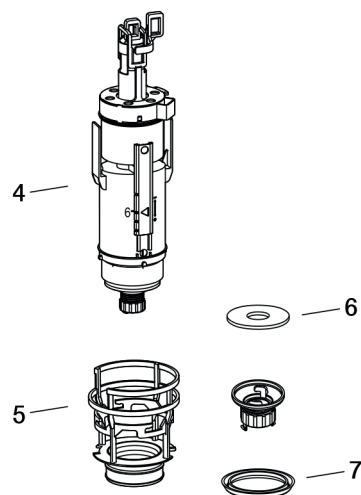


Spare parts

Control box Cistern Sanicontrol 6l start / stop + dual - flush technique (from 01-2010) Type A31.



1	9726-05 Inlet valve and reinforced water hose
2	9731-02 Reinforced water hose R 3/8 ", length: 250mm
3	9717-02 Shut off valve 1/2"
4	9713-02 Flushing valve, complete
5	9741 Basket holder for flushing valve
6	9733-01 Gasket for flushing valve
7	9741-01 Gasket for basket holder
8	9743-01 Ring seal for 90° flush pipe
9	9742 Cover for flush pipe
10	9742-01 Gasket for flush pipe, Ø 44mm
11	9732 Inlet valve bracket
12	9735 Bearing block for preassure rod
13	9734 Mounting panel, transparent
14	9701-01 Distance screws for flush button
15	9703-02 Extension set for spacer bolts
16	9704-02 Service tunnel with lid
17	9743-01 90° flush pipe



Thank you for taking the time to read this instruction thoroughly - it's a great investment!

For the latest version see our website.